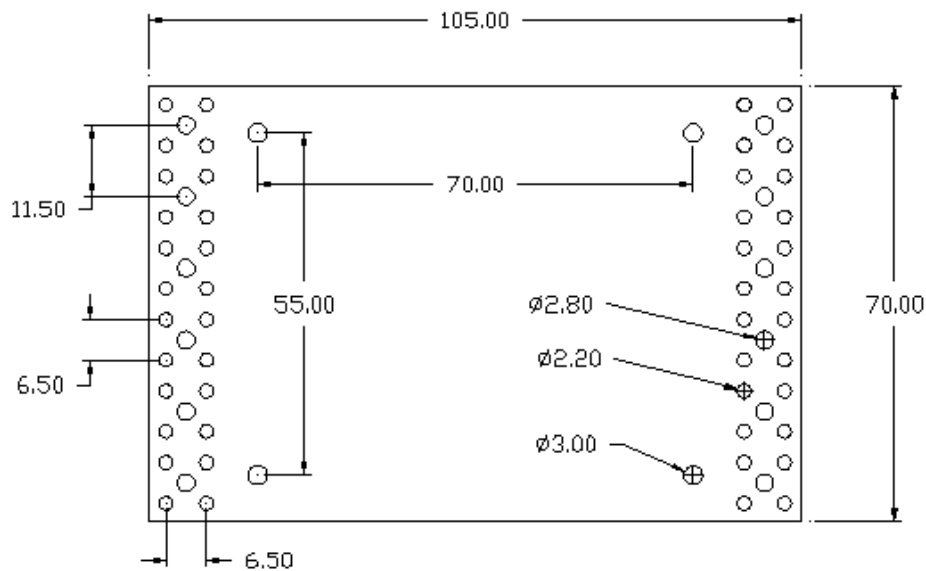
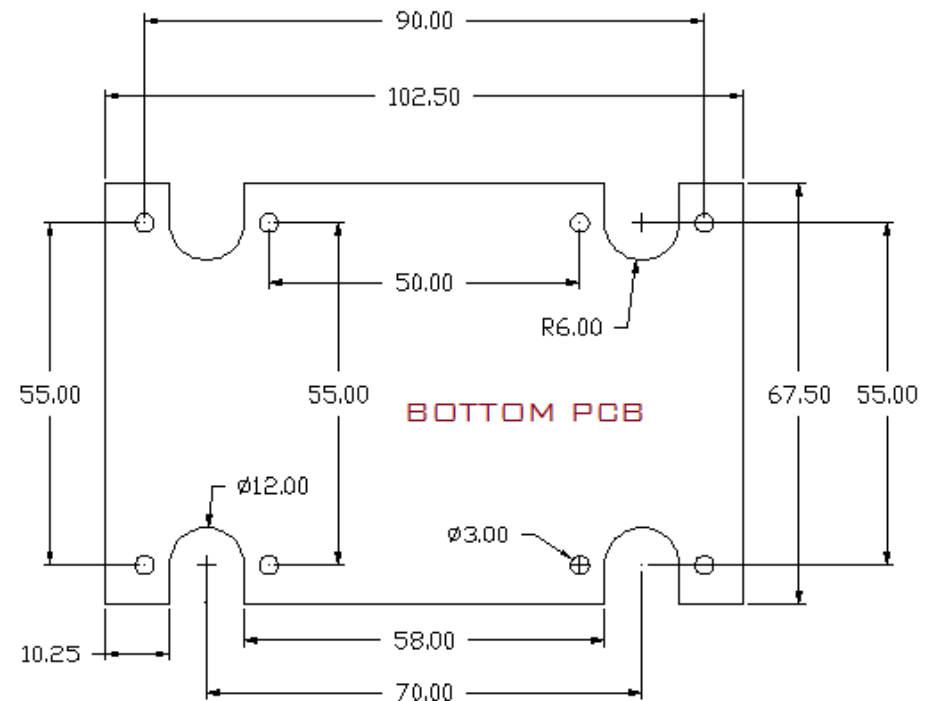


Ocean Enclosures

PCB Drawing of Din Rail/Wall Mounting Enclosure with 12 Poles



PCB BETWEEN TOP AND BOTTOM OF CASE



BOTTOM PCB

Ordering Code	Description
ELD-12	Din Rail Mount Case with 12 poles
ELW-12	Wall Mount Case with 12 poles

Electroconnect Systems

J-112, Ansa Industrial Estate, Saki Vihar Road, Sakinaka,
Mumbai – 400 072. (India)

Phone Nos.: 28471917/60

Email ID: electronicenclosures@gmail.com

Website: www.oceanenclosures.com